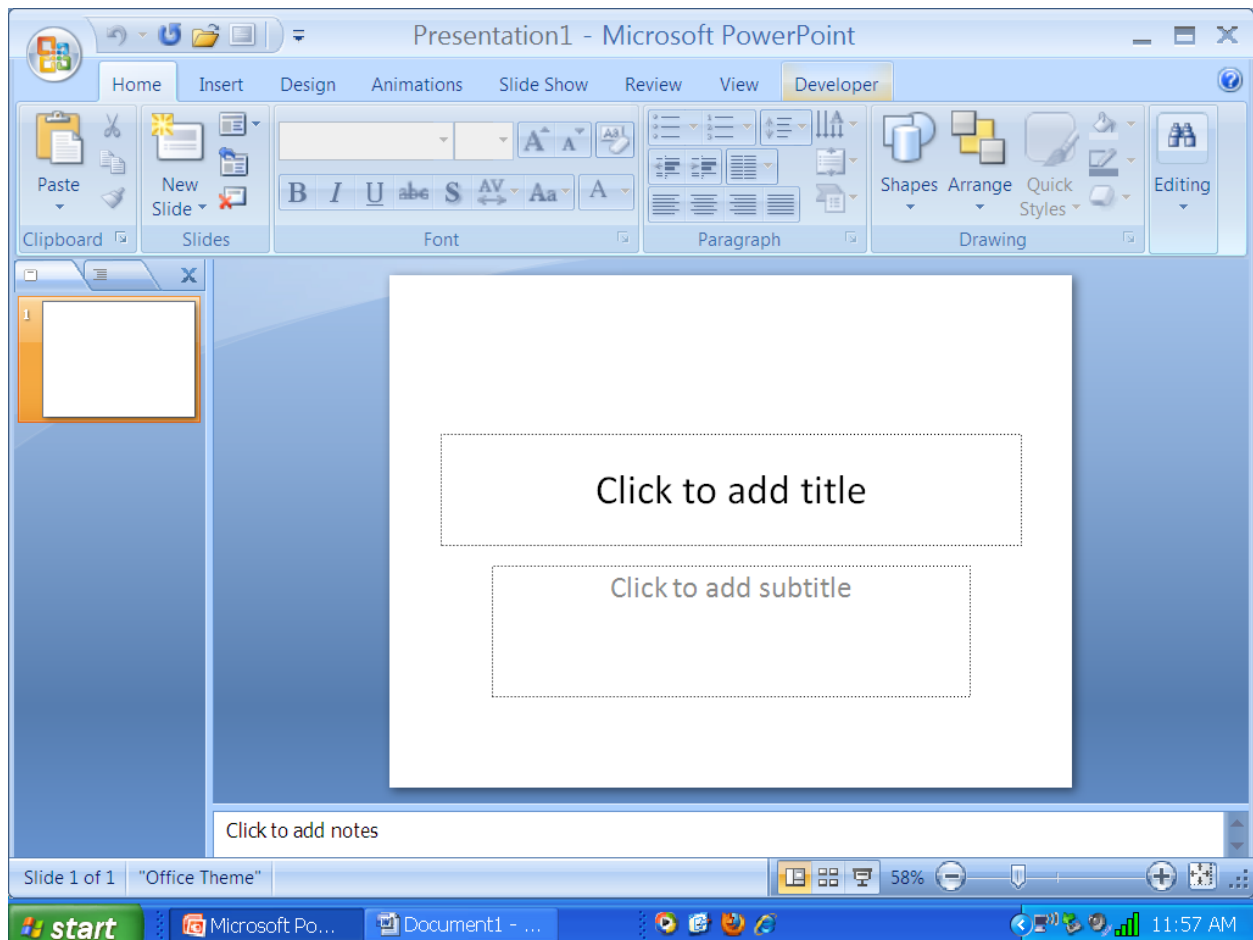


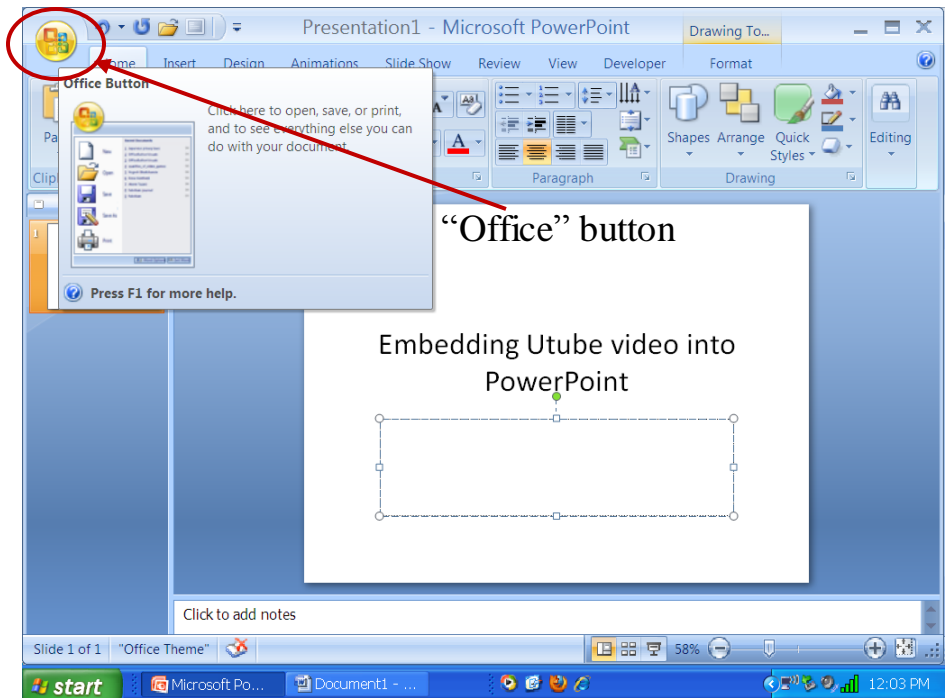
Embedding a Utube video into PowerPoint 2007

Accessing the Developer Tab

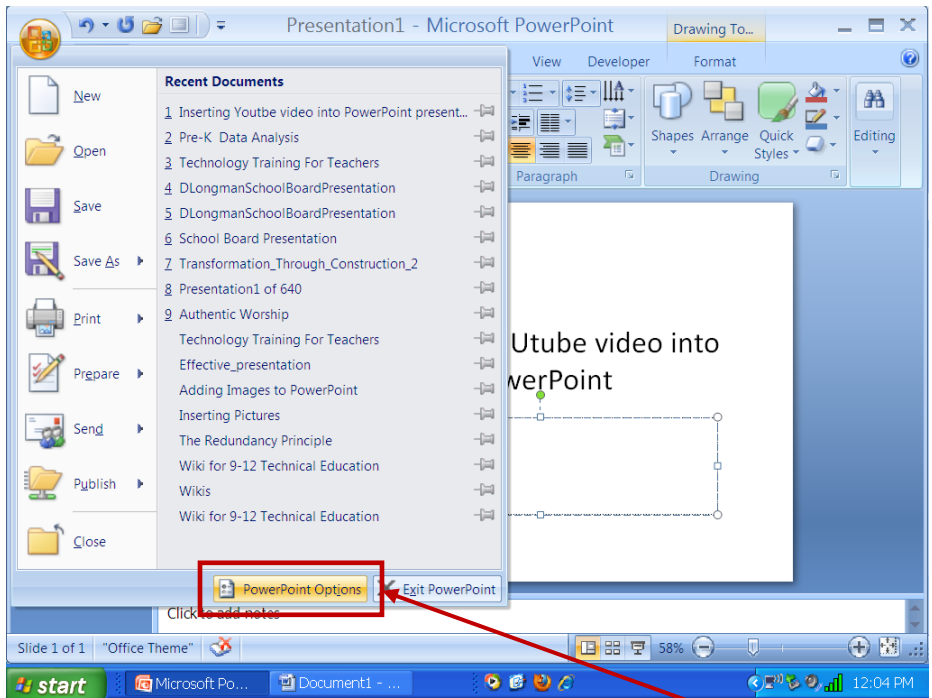
1. Make sure that the “Developer” tab is displayed on the ribbon.



2. If “Developer” tab is not displayed, follow these instructions to access it
 - Click on the “**Office**” button to open up the main menu of PowerPoint

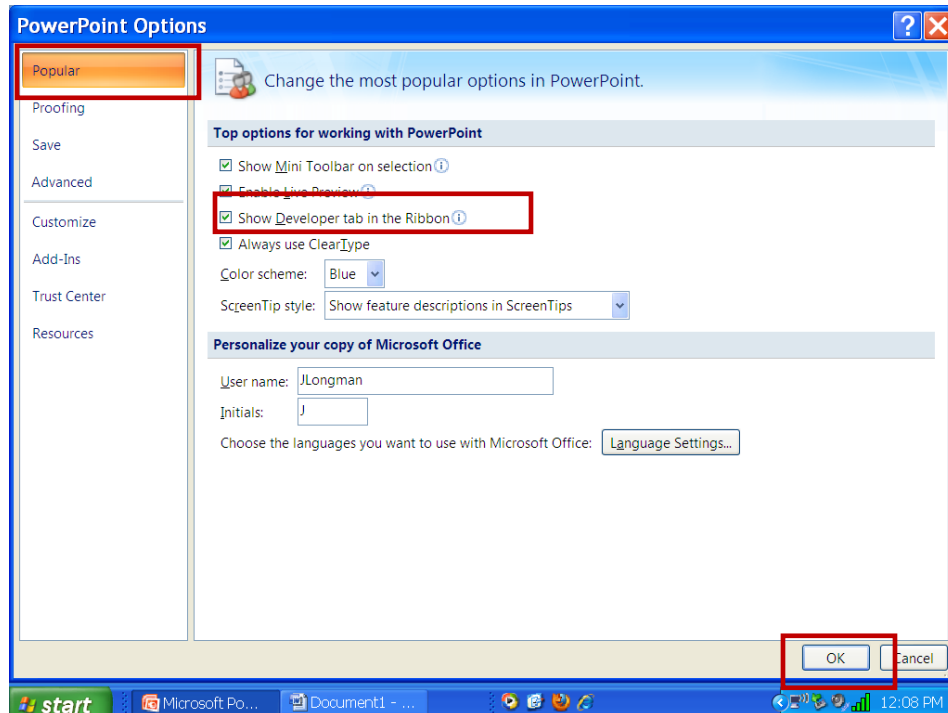


- Go to the bottom of the menu and click on **“PowerPoint Options”**

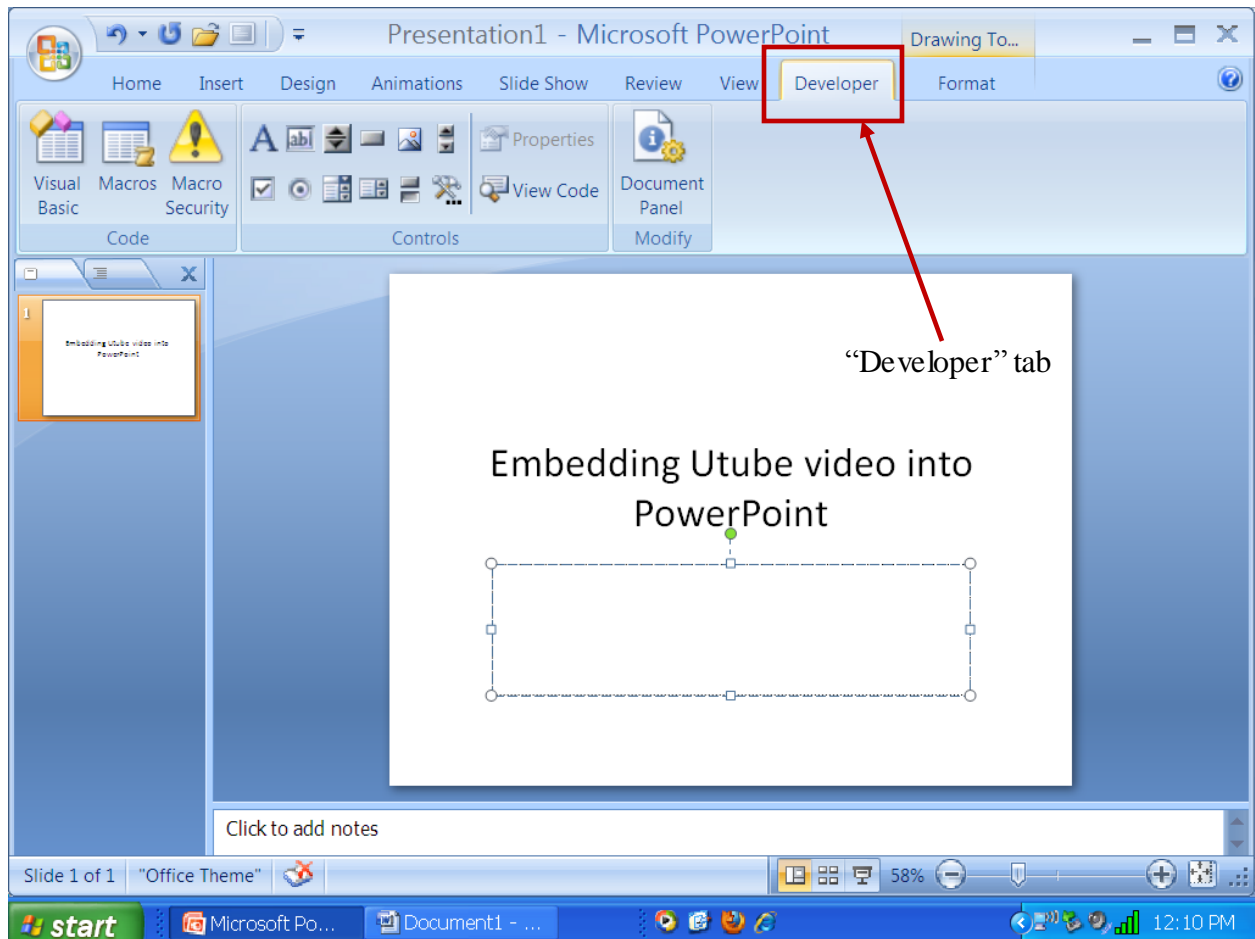


“PowerPoint Options” button

- Once the **PowerPoint Options** window opens, Select the “**Popular**” category, and put a **check** in the box next to **Show Developer tab in the Ribbon**. Then Click “**OK**” to exit,

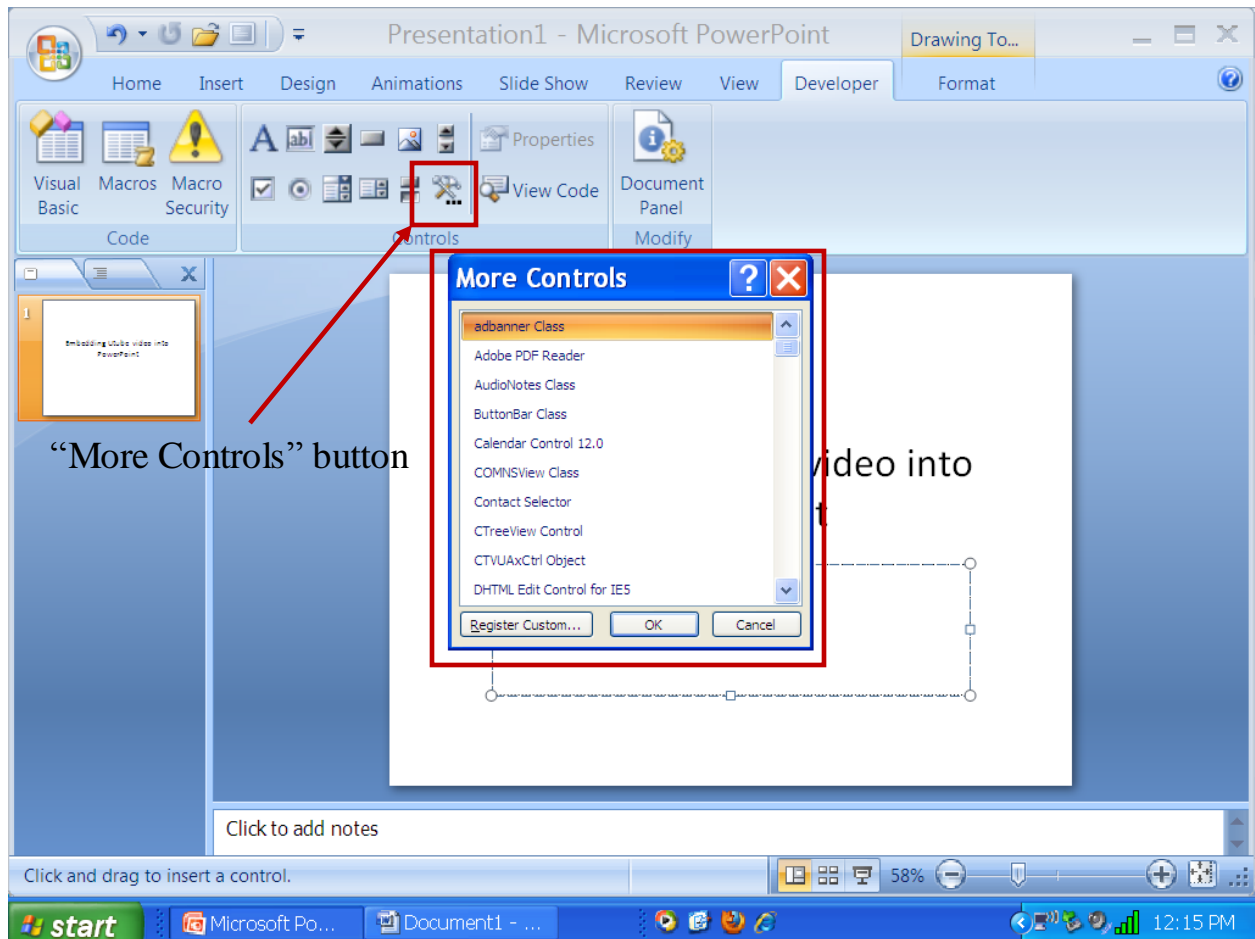


The “**Developer**” tab will now be present on the PowerPoint ribbon.

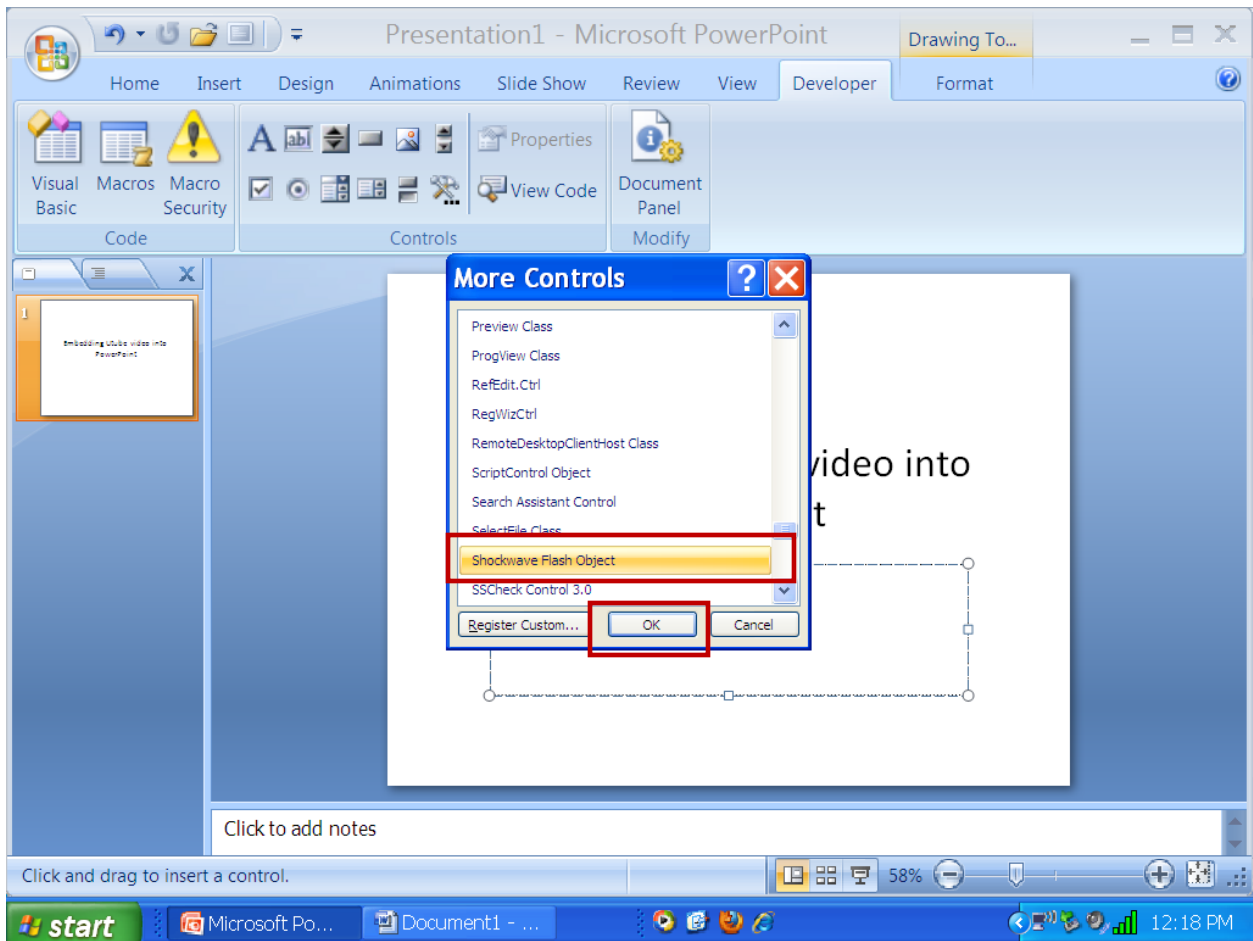


Embedding a YouTube Video

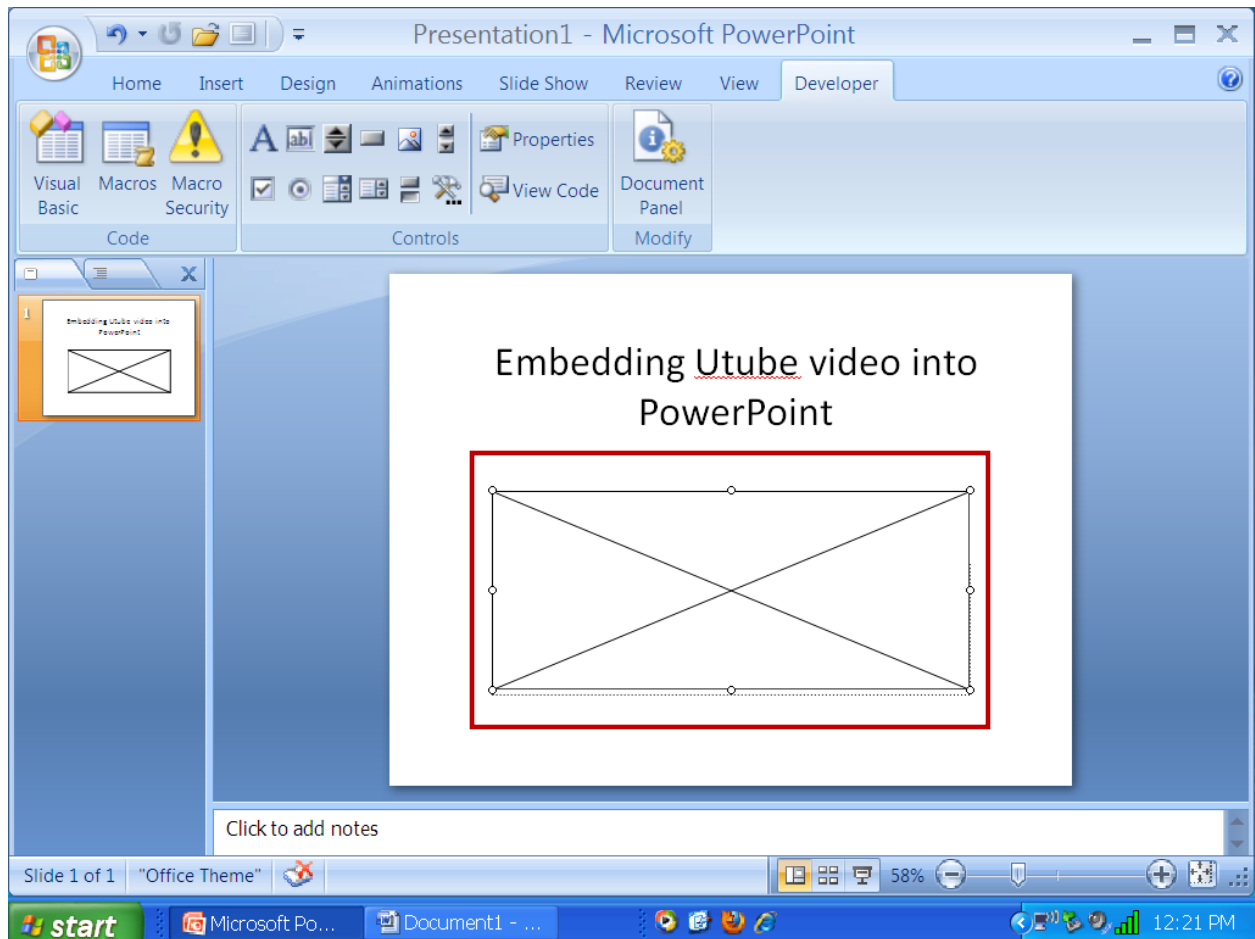
1. Select the slide that you want to embed the video then open the **Developer** tab and click on the **More Controls** button..



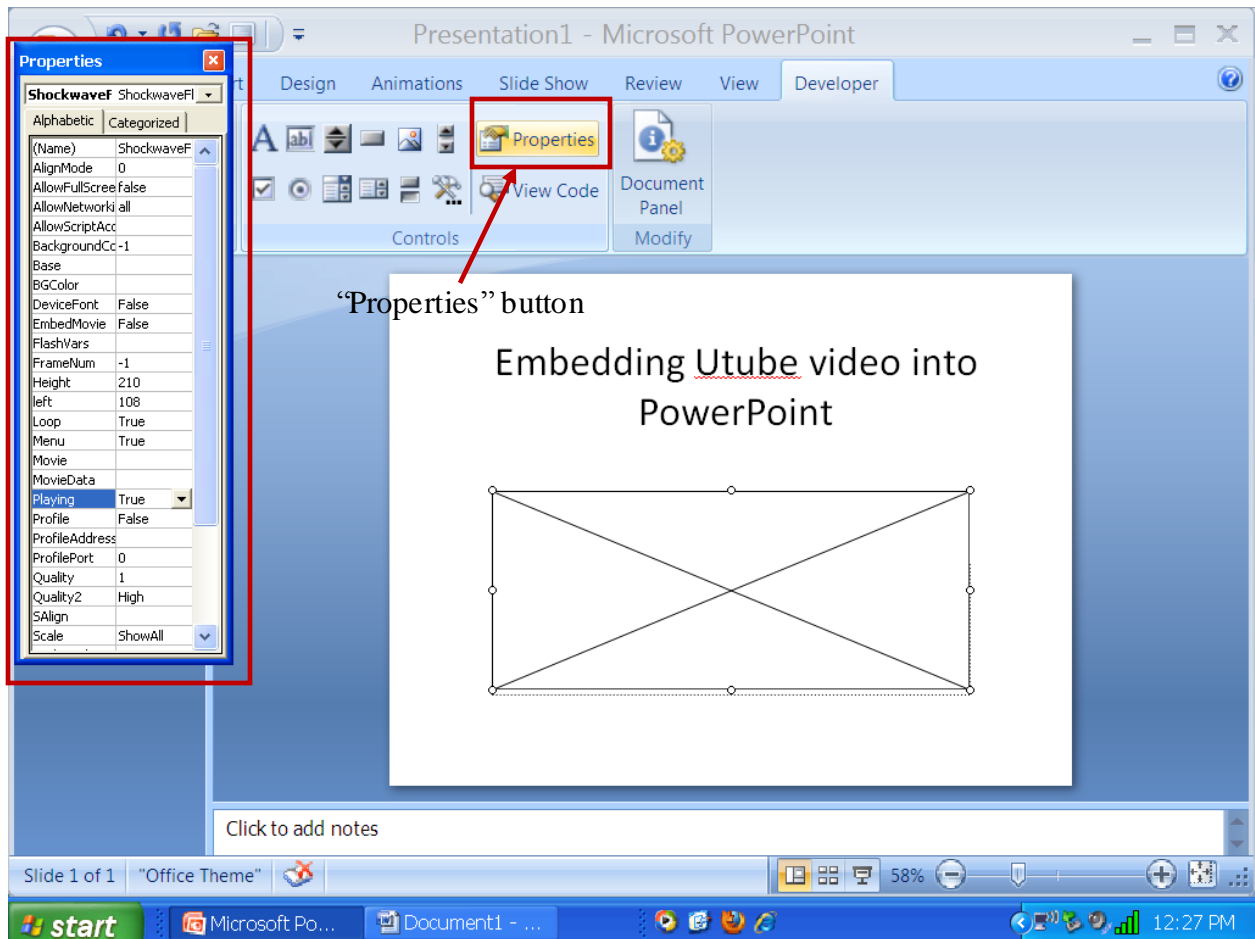
2. Scroll through the list and select **Shockwave Flash Object**, then Click **OK** to continue.



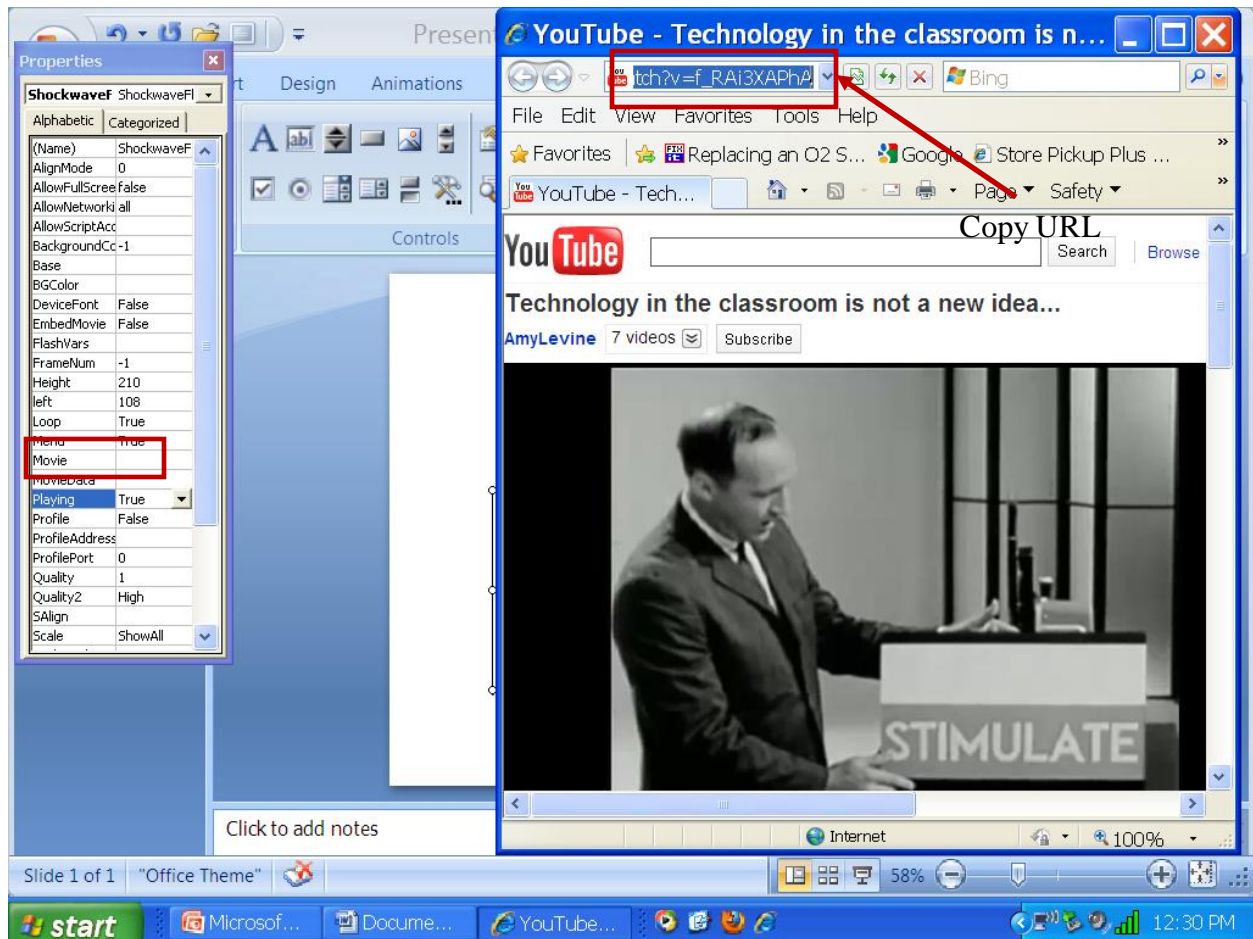
3. Use your cursor to draw a rectangular on the slide where you want your video to display.



4. Click on "**Properties**" in the "**Developer**" tab of the ribbon. This will open a **Properties** window for the "**Shockwave Flash Object**". You may need to resize this window in order to better see all the field properties.



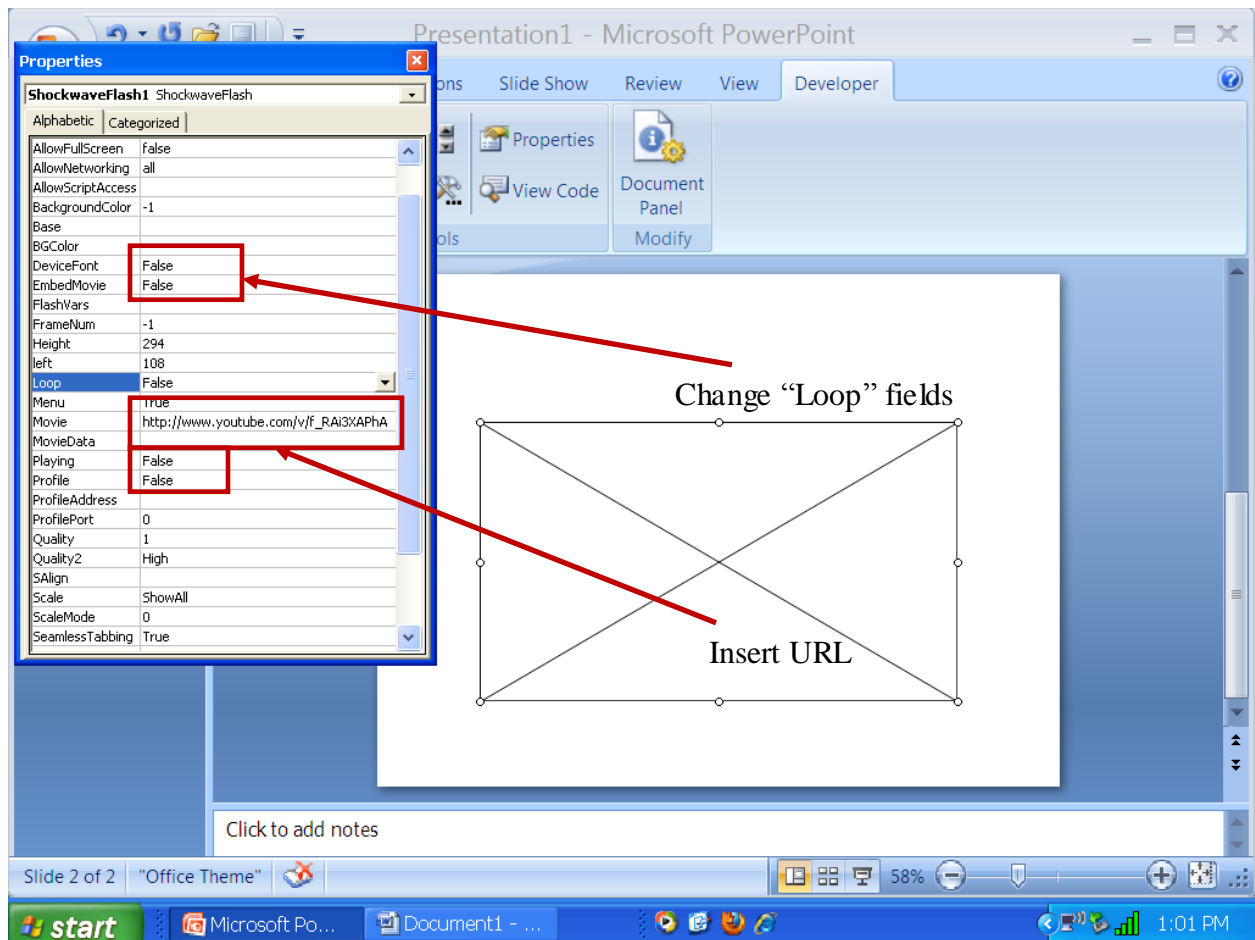
5. Go to the Utube website and copy the "URL" of the selected video.
http://www.youtube.com/watch?v=f_RAi3XAPhA



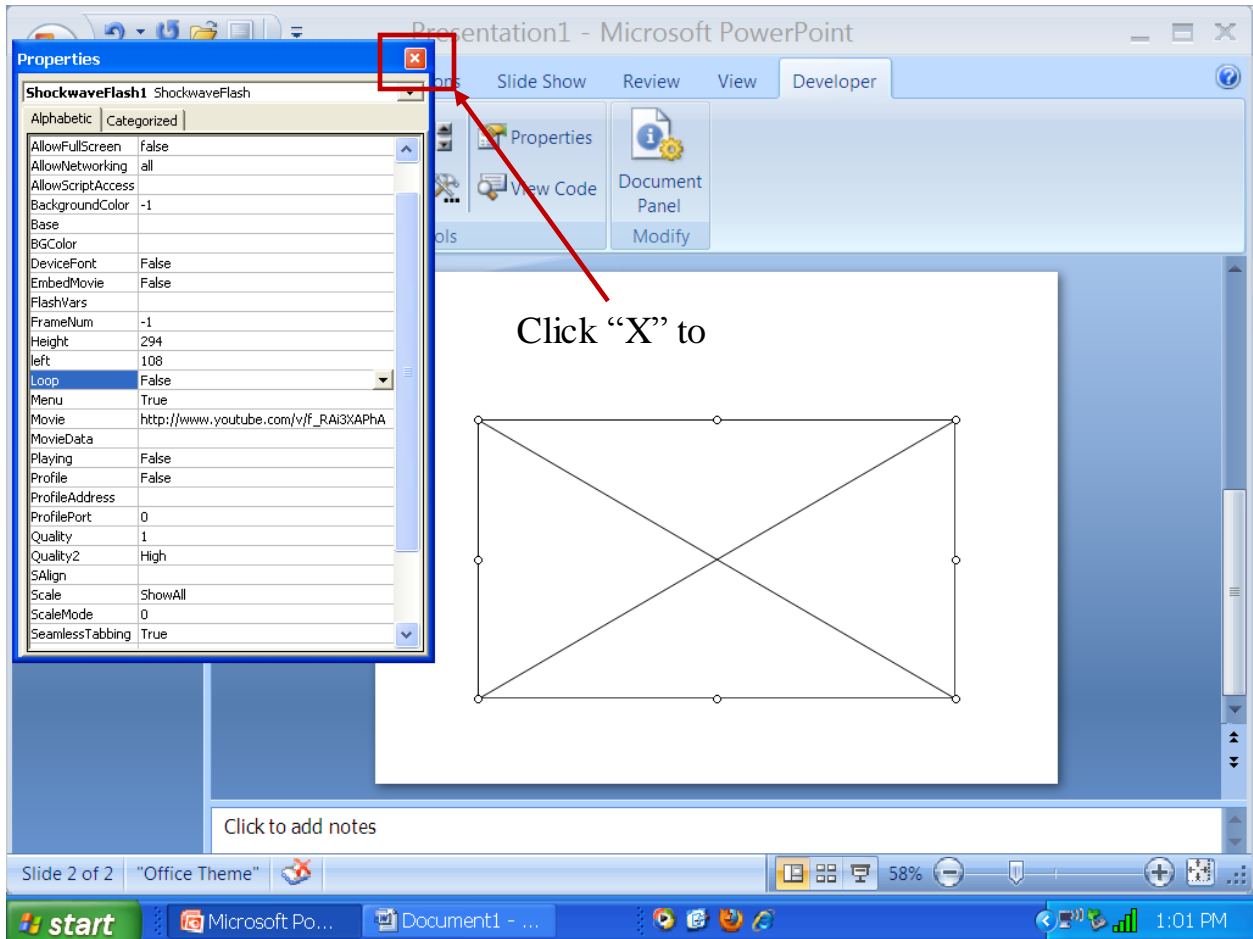
6. You will have to modify the URL of the video before adding it to the “**Movie**” field.

- In my example “**Technology in the classroom not a new idea**”, the URL was changed from http://www.youtube.com/watch?v=f_RAi3XAPhA to http://www.youtube.com/v/f_RAi3XAPhA by first deleting the “watch?” and replacing the “=” with a “/”.

7. In the “**Properties**” window, add the “**new**” URL of the YouTube video to the **Movie** field. Changed the **Loop** field to **False** if you want the video to play through one time instead of repeating. In addition, change the **Playing** field to **False** if you rather to start the video manually than have it start automatically.



6. Once you've finished making your modifications here, click on the "x" in the upper right-hand corner of the window to close it. All of your changes will be saved



7. In order to verify that the video works correctly, hit **F5** to preview your presentation. (Remember that you need to have an internet connection in order for the YouTube video to be played).

Embedding Utube video into PowerPoint



http://www.youtube.com/watch?v=f_RAi3XAPhA

<http://www.brighthub.com/computing/windows-platform/articles/9698.aspx>